

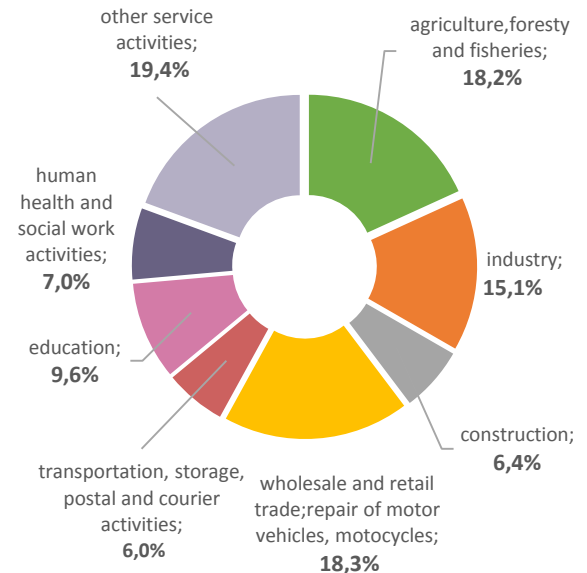


	2010	2016	2017
Economic activity of population aged 15 to 70 years, thous. persons			
Economically active population	1190,0	1134,9	1136,6
employed persons	1096,7	1047,0	1050,8
unemployed persons	93,3	87,9	85,8
Economically inactive population	702,1	736,6	733,6

	2014	2016	2017
Employed population by types of economic activity, thous. persons	1038,2	1047,0	1050,8
agriculture, forestry and fisheries	189,2	191,5	191,5
industry	154,2	148,9	158,4
construction	67,7	69,5	67,5
wholesale and retail trade; repair of motor vehicles, motor cycles	189,3	191,4	192,4
transportation, storage, postal and courier activities	64,1	63,6	63,4
accommodation and food service activities	24,8	24,1	24,4
information and telecommunications	18,7	18,1	18,0
professional, scientific and technical activities	21,3	21,3	21,1
public administration and defence; compulsory social security	55,7	62,2	60,1
education	103,2	103,0	100,4
human health and social work activities	77,7	74,0	73,6
other service activities	72,3	79,4	80,0

LABOUR MARKET

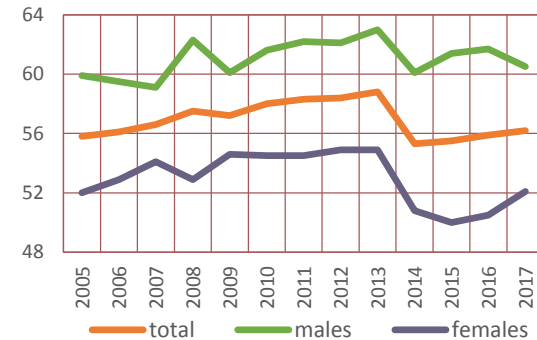
Distribution of employed population aged 15 to 70 years by types of economic activity in 2017





	2010	2016	2017
Distribution of employed population, %			
males	51,5	53,5	52,3
females	48,5	46,5	47,7
urban settlements	58,7	63,5	63,4
rural area	41,3	36,5	36,6
Employment rate, %	58,0	55,9	56,2
urban settlements	54,7	57,0	57,7
rural area	63,4	54,1	53,8
Distribution of unemployed population (by ILO)			
males	59,1	61,4	66,0
females	40,9	38,6	34,0
urban settlements	74,7	66,7	66,1
rural area	25,3	33,3	33,9
Unemployment rate (by ILO), %	7,8	7,7	7,5
males	8,9	8,8	9,3
females	6,7	6,5	5,5
urban settlements	9,8	8,1	7,8
rural area	5,0	7,1	7,0
Distribution of unemployed persons by duration of job search, %			
Less than 3 months	20,4	37,5	28,8
3 to 6 months	22,3	27,0	25,0
6 to 9 months	11,9	12,0	13,8
9 to 12 months	11,6	6,1	7,6
12 months and over	33,8	17,4	24,8

Employment rate (by ILO), %



Unemployment rate (by ILO), %

